











Stocking Avenue LRD - Landscape and Visual Impact Assessment

Viewpoint Ref: VP4      View from The Rock Meadow Park at Scholarstown (approximately 598m)

**Visualisation Type 4** - This 90°cylindrical projection panorama has been captured, prepared and presented in accordance with the guidance set out in the Landscape Institute Technical Guidance Note 06/19 for Type 4 Visualisations and the Scottish Natural Heritage 2017 guidance 'Visual Representation of Wind Farms'. This image has been presented in a 90° cylindrical format to aid visual comprehension of linear infrastructure occupying a wide FoV, which avoids splitting the view across numerous multiple images.

Easting (ITM):	712038	Horizontal Field of View: 90° (cylindrical projection)	Date and Time:	20/11/2024      14:14	Photography Software:	Adobe Lightroom	Modelling Software:	3DS Max 2023
Northing (ITM):	726403	Principal Distance: 522 mm	Camera:	Canon 5D Mark II Digital SLR	Panorama Stitching Software:	PTGui Pro	Rendering Software:	Mental Ray/Corona
Direction of View:	186 °	Paper size: 841 x 297 mm	Lens:	Canon Fixed 50mm Full Frame Sensor	Post-Production Software:	Adobe Photoshop	GNSS Unit:	Trimble Catalyst (GNSS)
Distance to Site:	598 km	Correct printed image size: 820 x 251 mm	Panoramic Head:	Manfrotto Pano Head/Leveller	Formatting Software:	Adobe Illustrator/InDesign	Topographical Data:	LiDAR/OSI Terrain Data
Elevation:	84.8 m	Enlargement Factor: 96%	Camera Height:	1.7m (AGL)			GPS Ref:	Georeferenced/Surveyed DWGS















Stocking Avenue LRD - Landscape and Visual Impact Assessment

Viewpoint Ref: VP6a      View from local road (Stocking Well) at Woodtown (approximately 250m)

**Visualisation Type 4** - This 90°cylindrical projection panorama has been captured, prepared and presented in accordance with the guidance set out in the Landscape Institute Technical Guidance Note 06/19 for Type 4 Visualisations and the Scottish Natural Heritage 2017 guidance 'Visual Representation of Wind Farms'. This image has been presented in a 90° cylindrical format to aid visual comprehension of linear infrastructure occupying a wide FoV, which avoids splitting the view across numerous multiple images.

Easting (ITM):	712137	Horizontal Field of View: 90° (cylindrical projection)	Date and Time:	20/11/2024      13:43	Photography Software:	Adobe Lightroom	Modelling Software:	3DS Max 2023
Northing (ITM):	726082	Principal Distance: 522 mm	Camera:	Canon 5D Mark II Digital SLR	Panorama Stitching Software:	PTGui Pro	Rendering Software:	Mental Ray/Corona
Direction of View:	139 °	Paper size: 841 x 297 mm	Lens:	Canon Fixed 50mm Full Frame Sensor	Post-Production Software:	Adobe Photoshop	GNSS Unit:	Trimble Catalyst (GNSS)
Distance to Site:	246.9 km	Correct printed image size: 820 x 251 mm	Panoramic Head:	Manfrotto Pano Head/Leveller	Formatting Software:	Adobe Illustrator/InDesign	Topographical Data:	LiDAR/OSI Terrain Data
Elevation:	98.0 m	Enlargement Factor: 96%	Camera Height:	1.7m (AGL)			GPS Ref:	Georeferenced/Surveyed DWGS





90° Outline View  
indicating physical position and scale of the  
proposed development irrespective of screening



Stocking Avenue LRD - Landscape and Visual Impact Assessment

Viewpoint Ref: VP6a      View from local road (Stocking Well) at Woodtown (approximately 250m)

**Visualisation Type 4** - This 90°cylindrical projection panorama has been captured, prepared and presented in accordance with the guidance set out in the Landscape Institute Technical Guidance Note 06/19 for Type 4 Visualisations and the Scottish Natural Heritage 2017 guidance 'Visual Representation of Wind Farms'. This image has been presented in a 90° cylindrical format to aid visual comprehension of linear infrastructure occupying a wide FoV, which avoids splitting the view across numerous multiple images.

Easting (ITM):	712137	Horizontal Field of View: 90° (cylindrical projection)	Date and Time:	20/11/2024      13:43	Photography Software:	Adobe Lightroom	Modelling Software:	3DS Max 2023
Northing (ITM):	726082	Principal Distance: 522 mm	Camera:	Canon 5D Mark II Digital SLR	Panorama Stitching Software:	PTGui Pro	Rendering Software:	Mental Ray/Corona
Direction of View:	139 °	Paper size: 841 x 297 mm	Lens:	Canon Fixed 50mm Full Frame Sensor	Post-Production Software:	Adobe Photoshop	GNSS Unit:	Trimble Catalyst (GNSS)
Distance to Site:	246.9 m	Correct printed image size: 820 x 251 mm	Panoramic Head:	Manfrotto Pano Head/Leveller	Formatting Software:	Adobe Illustrator/InDesign	Topographical Data:	LiDAR/OSI Terrain Data
Elevation:	98.0 m	Enlargement Factor: 96%	Camera Height:	1.7m (AGL)			GPS Ref:	Georeferenced/Surveyed DWGS







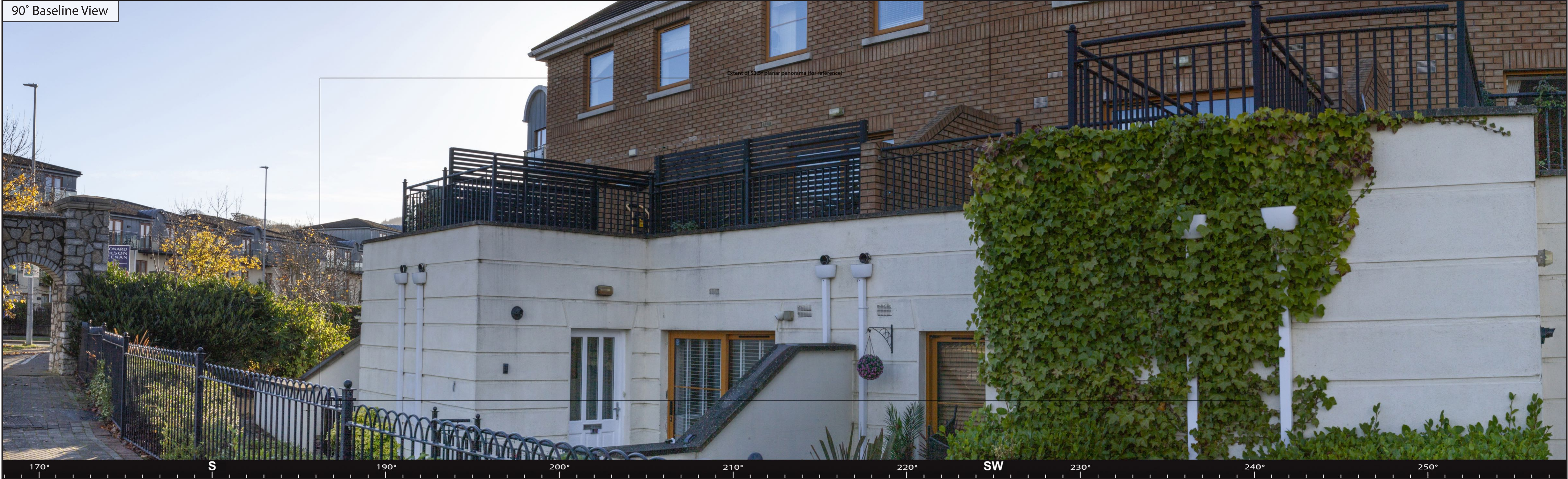
Stocking Avenue LRD - Landscape and Visual Impact Assessment  
Viewpoint Ref: VP6a      View from local road (Stocking Well) at Woodtown (approximately 250m)

**Visualisation Type 4** - This 90°cylindrical projection panorama has been captured, prepared and presented in accordance with the guidance set out in the Landscape Institute Technical Guidance Note 06/19 for Type 4 Visualisations and the Scottish Natural Heritage 2017 guidance 'Visual Representation of Wind Farms'. This image has been presented in a 90° cylindrical format to aid visual comprehension of linear infrastructure occupying a wide FoV, which avoids splitting the view across numerous multiple images.

Easting (ITM):	712137	Horizontal Field of View: 90° (cylindrical projection)	Date and Time:	20/11/2024      13:43	Photography Software:	Adobe Lightroom	Modelling Software:	3DS Max 2023
Northing (ITM):	726082	Principal Distance: 522 mm	Camera:	Canon 5D Mark II Digital SLR	Panorama Stitching Software:	PTGui Pro	Rendering Software:	Mental Ray/Corona
Direction of View:	139 °	Paper size: 841 x 297 mm	Lens:	Canon Fixed 50mm Full Frame Sensor	Post-Production Software:	Adobe Photoshop	GNSS Unit:	Trimble Catalyst (GNSS)
Distance to Site:	246.9 km	Correct printed image size: 820 x 251 mm	Panoramic Head:	Manfrotto Pano Head/Leveller	Formatting Software:	Adobe Illustrator/InDesign	Topographical Data:	LiDAR/OSI Terrain Data
Elevation:	98.0 m	Enlargement Factor: 96%	Camera Height:	1.7m (AGL)			GPS Ref:	Georeferenced/Surveyed DWGS







Stocking Avenue LRD - Landscape and Visual Impact Assessment

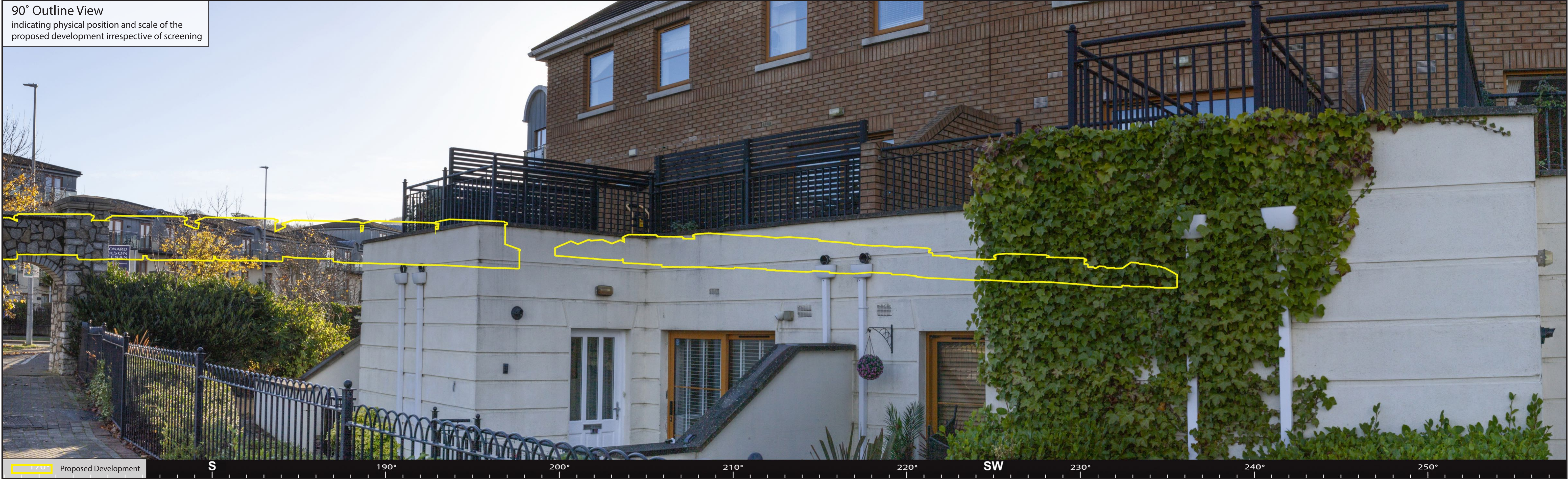
Viewpoint Ref: VP6b      View from local road (Stocking Well) at Woodtown (approximately 250m)

**Visualisation Type 4** - This 90° cylindrical projection panorama has been captured, prepared and presented in accordance with the guidance set out in the Landscape Institute Technical Guidance Note 06/19 for Type 4 Visualisations and the Scottish Natural Heritage 2017 guidance 'Visual Representation of Wind Farms'. This image has been presented in a 90° cylindrical format to aid visual comprehension of linear infrastructure occupying a wide FoV, which avoids splitting the view across numerous multiple images.

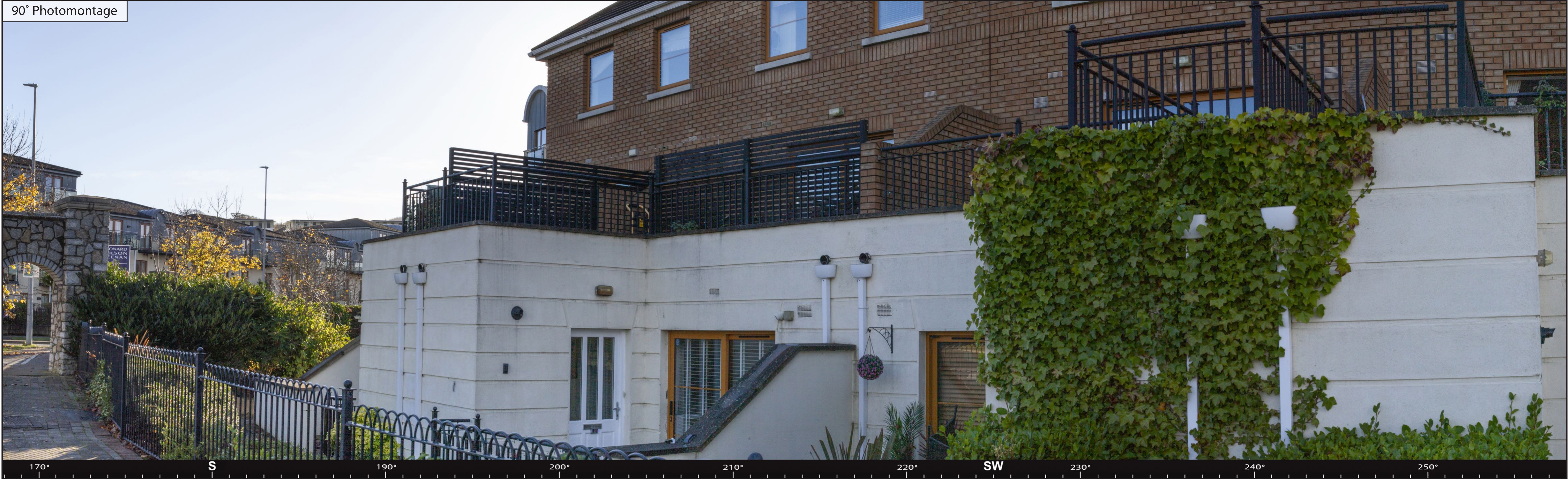
Easting (ITM):	712137	Horizontal Field of View: 90° (cylindrical projection)	Date and Time:	20/11/2024      13:43	Photography Software:	Adobe Lightroom	Modelling Software:	3DS Max 2023
Northing (ITM):	726082	Principal Distance:	Camera:	Canon 5D Mark II Digital SLR	Panorama Stitching Software:	PTGui Pro	Rendering Software:	Mental Ray/Corona
Direction of View:	213 °	Paper size:	Lens:	Canon Fixed 50mm Full Frame Sensor	Post-Production Software:	Adobe Photoshop	GNSS Unit:	Trimble Catalyst (GNSS)
Distance to Site:	246.9 km	Correct printed image size:	Panoramic Head:	Manfrotto Pano Head/Leveller	Formatting Software:	Adobe Illustrator/InDesign	Topographical Data:	LiDAR/OSI Terrain Data
Elevation:	98.0 m	Enlargement Factor:	Camera Height:	1.7m (AGL)			GPS Ref:	Georeferenced/Surveyed DWGS











Stocking Avenue LRD - Landscape and Visual Impact Assessment

Viewpoint Ref: VP6b      View from local road (Stocking Well) at Woodtown (approximately 250m)

**Visualisation Type 4** - This 90°cylindrical projection panorama has been captured, prepared and presented in accordance with the guidance set out in the Landscape Institute Technical Guidance Note 06/19 for Type 4 Visualisations and the Scottish Natural Heritage 2017 guidance 'Visual Representation of Wind Farms'. This image has been presented in a 90° cylindrical format to aid visual comprehension of linear infrastructure occupying a wide FoV, which avoids splitting the view across numerous multiple images.

Easting (ITM):	712137	Horizontal Field of View: 90° (cylindrical projection)	Date and Time:	20/11/2024      13:43	Photography Software:	Adobe Lightroom	Modelling Software:	3DS Max 2023
Northing (ITM):	726082	Principal Distance:	Camera:	Canon 5D Mark II Digital SLR	Panorama Stitching Software:	PTGui Pro	Rendering Software:	Mental Ray/Corona
Direction of View:	213 °	Paper size:	Lens:	Canon Fixed 50mm Full Frame Sensor	Post-Production Software:	Adobe Photoshop	GNSS Unit:	Trimble Catalyst (GNSS)
Distance to Site:	246.9 km	Correct printed image size:	Panoramic Head:	Manfrotto Pano Head/Leveller	Formatting Software:	Adobe Illustrator/InDesign	Topographical Data:	LiDAR/OSI Terrain Data
Elevation:	98.0 m	Enlargement Factor:	Camera Height:	1.7m (AGL)			GPS Ref:	Georeferenced/Surveyed DWGS









