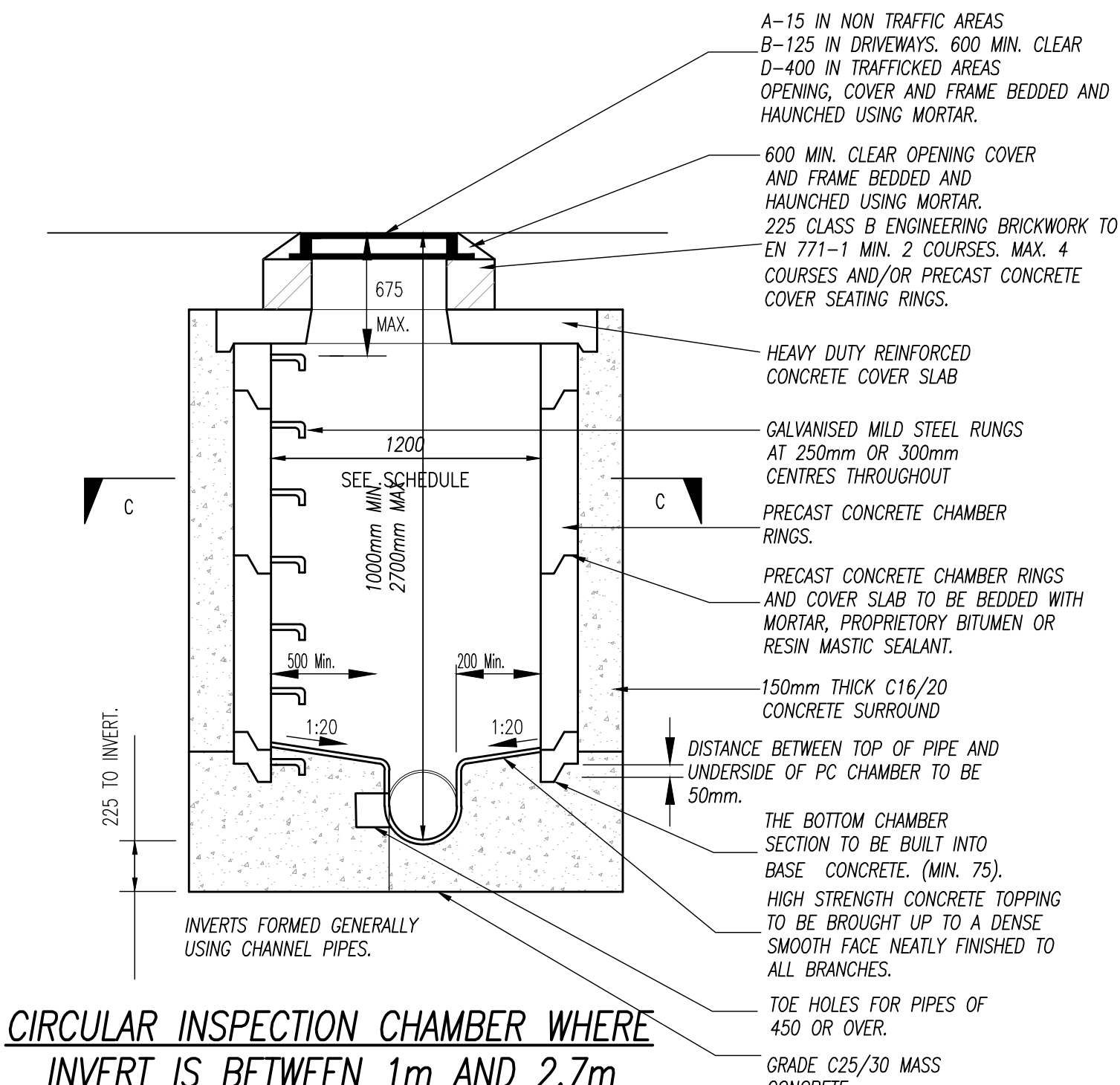
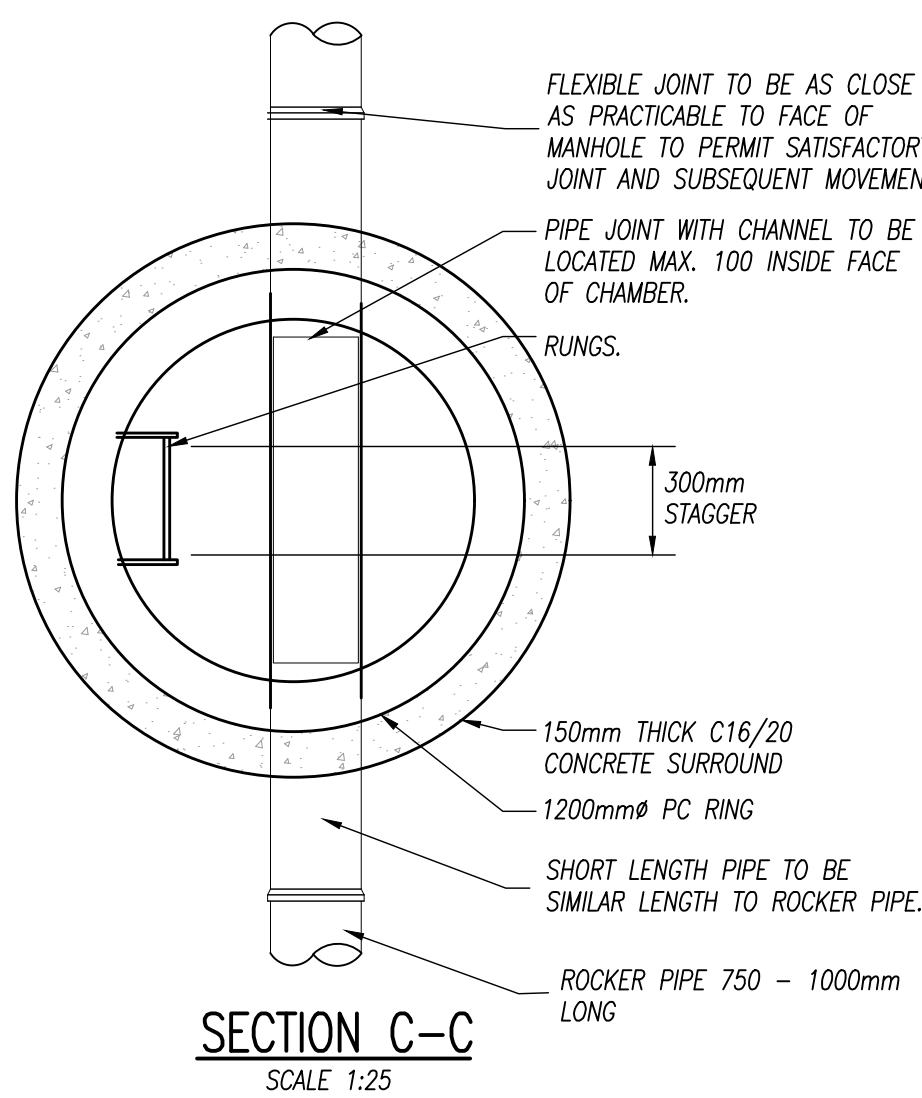
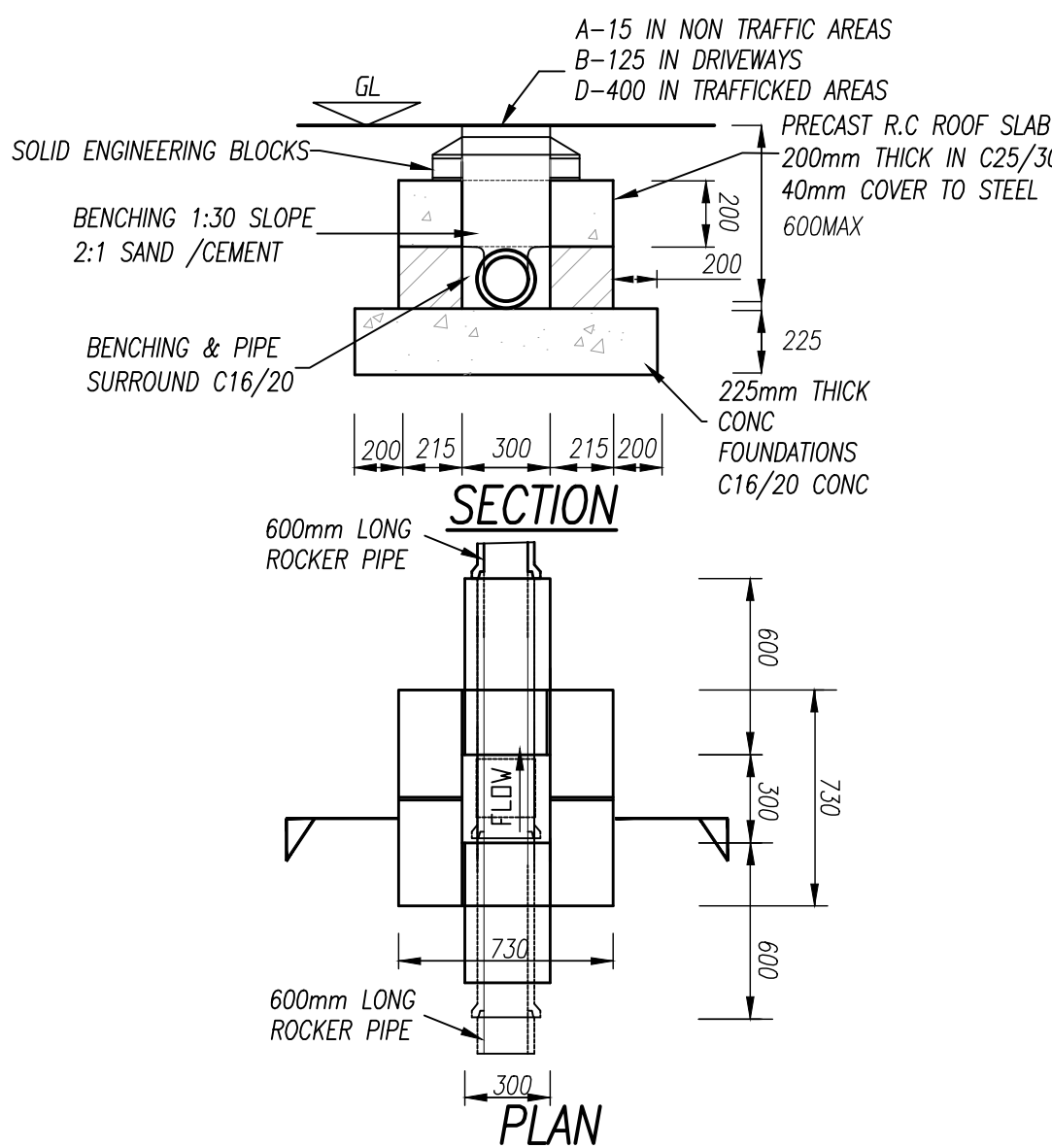


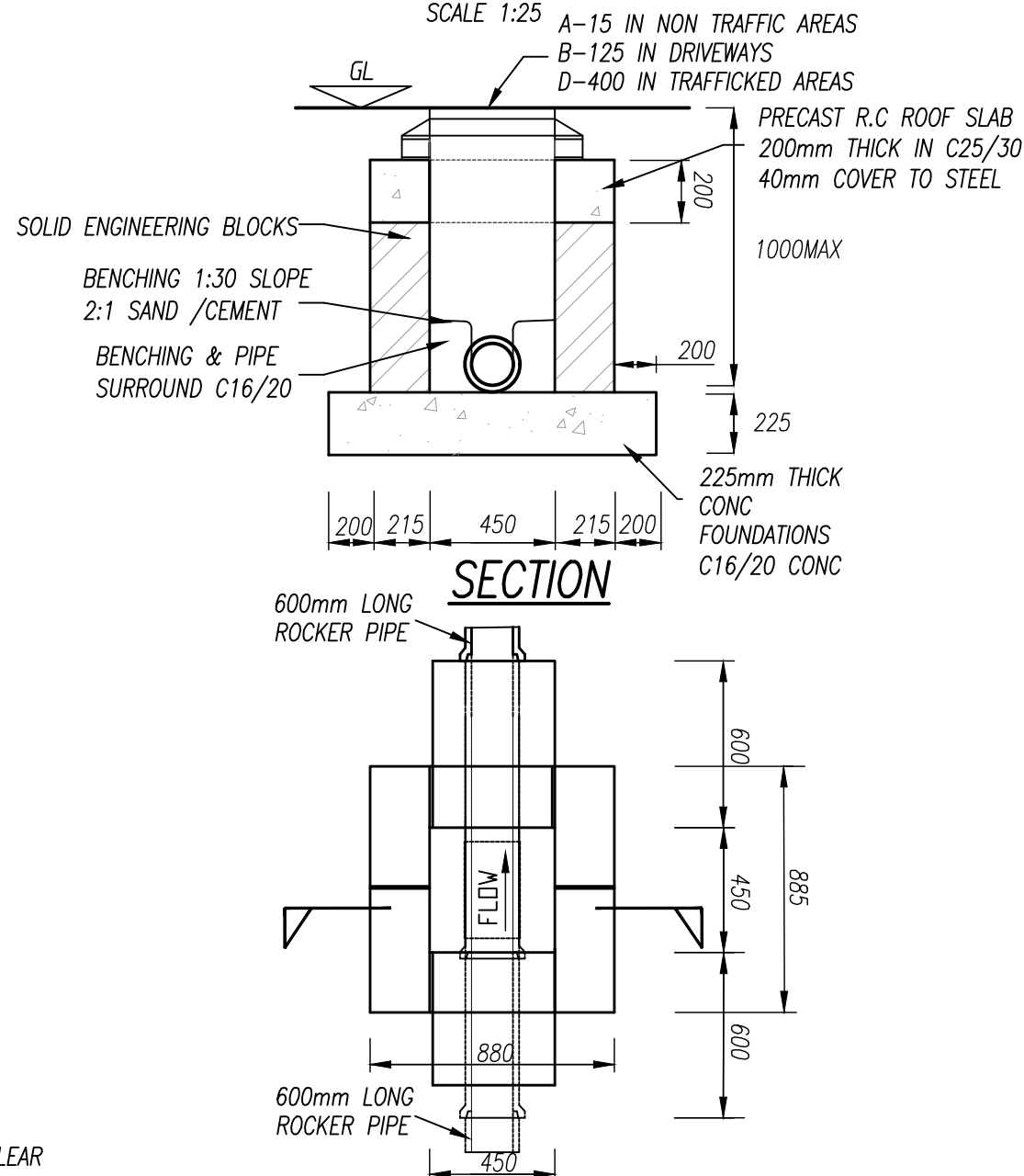
**CIRCULAR INSPECTION CHAMBER WHERE
INVERT IS 0.6m OR LESS BUILDING
REGULATIONS TGD SECTION H TABLE 9**
SCALE 1:25



**CIRCULAR INSPECTION CHAMBER WHERE
INVERT IS BETWEEN 1m AND 2.7m
BUILDING REGULATIONS TGD SECTION H
TABLE 9**
SCALE 1:25

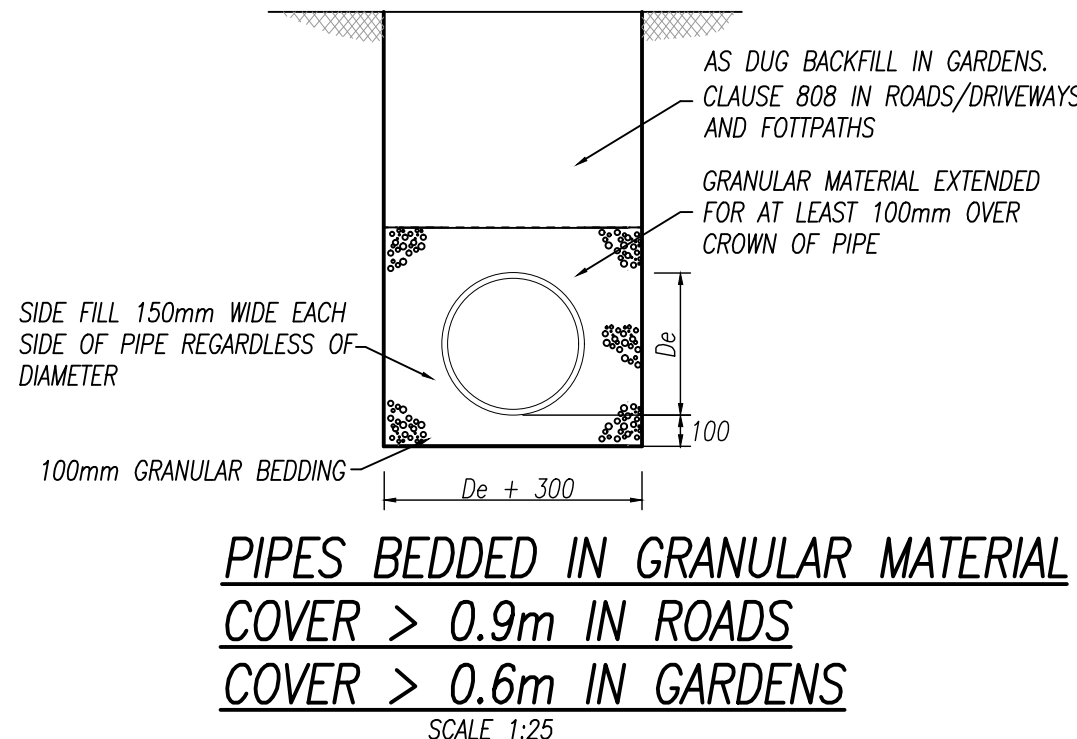


**INSPECTION CHAMBER WHERE INVERT IS 0.6m OR LESS
BUILDING REGULATIONS TGD SECTION H TABLE 9**
SCALE 1:25

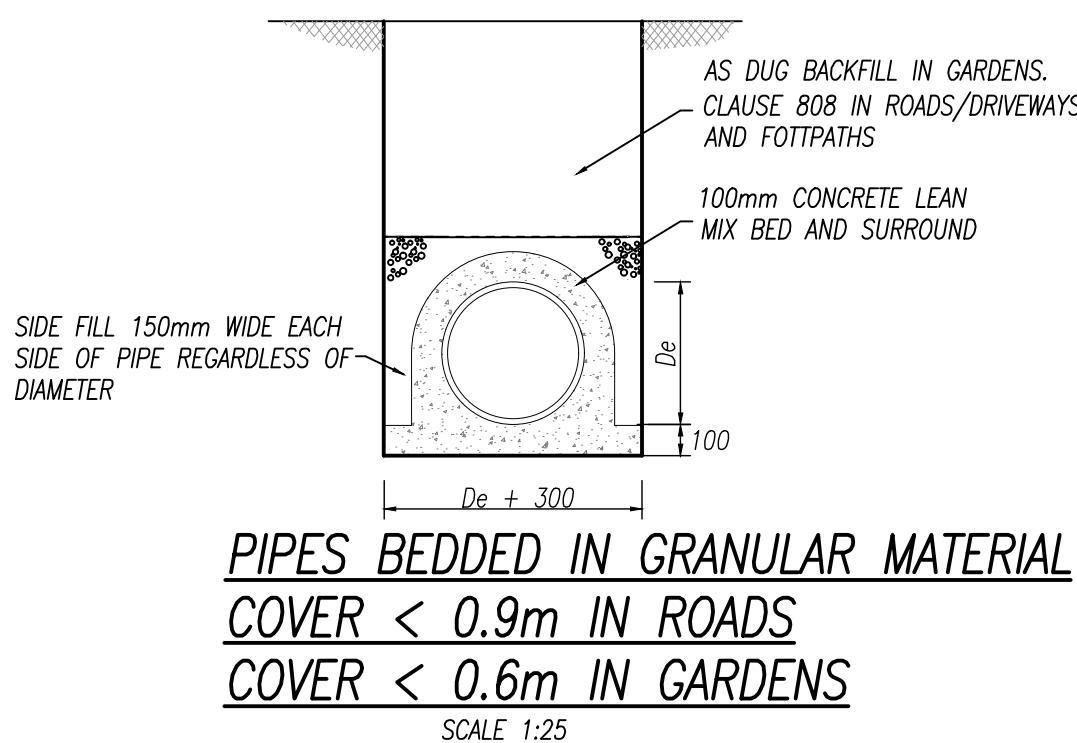


**INSPECTION CHAMBER WHERE INVERT IS
1m OR LESS BUILDING REGULATIONS
TGD SECTION H TABLE 9**
SCALE 1:25

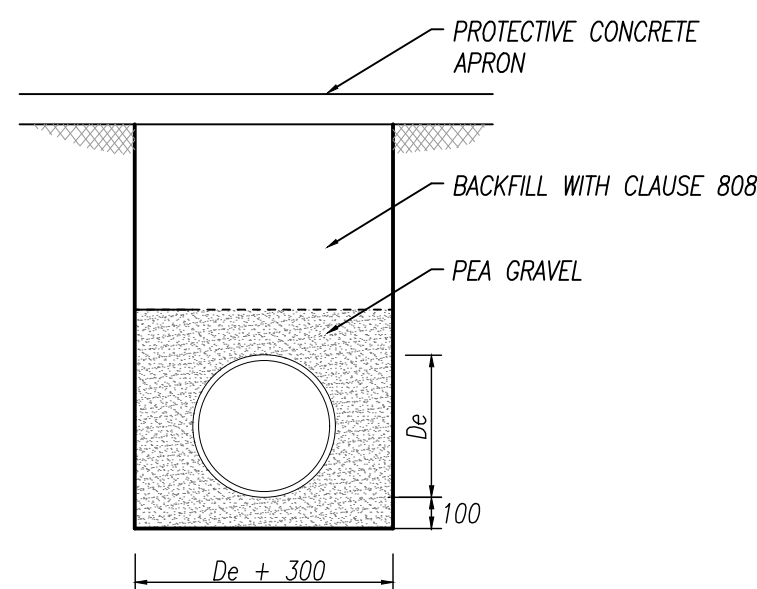
TABLE 9 Minimum dimensions for access fitting and chambers					
Type	Depth to (m)	Internal Sizes		Cover Sizes	
		length x width (mm x mm)	Circular (mm)	length x width (mm x mm)	Circular (mm)
Rodding eye					
Access Fitting					
small	0.6 or less	150 x 100	150	150 x 100	150
large		300 x 100	-	300 x 100	-
Inspection Chamber	0.6 or less	300 x 300	190*	300 x 300	190*
	1.0 or less	450 x 450	450	450 x 450	450**
Manhole	1.5 or less	1200 x 750	1000	600 x 600	600
	over 1.5	1200 x 750	1200	600 x 600	600
	over 2.7	1200 x 840	1200	600 x 600	600
Shaft	over 2.7	900 x 840	900	600 x 600	600
Note:					
* For clayware or plastics may be reduced to 430mm in order to provide support for cover and frame					
** Drains up to 150mm					



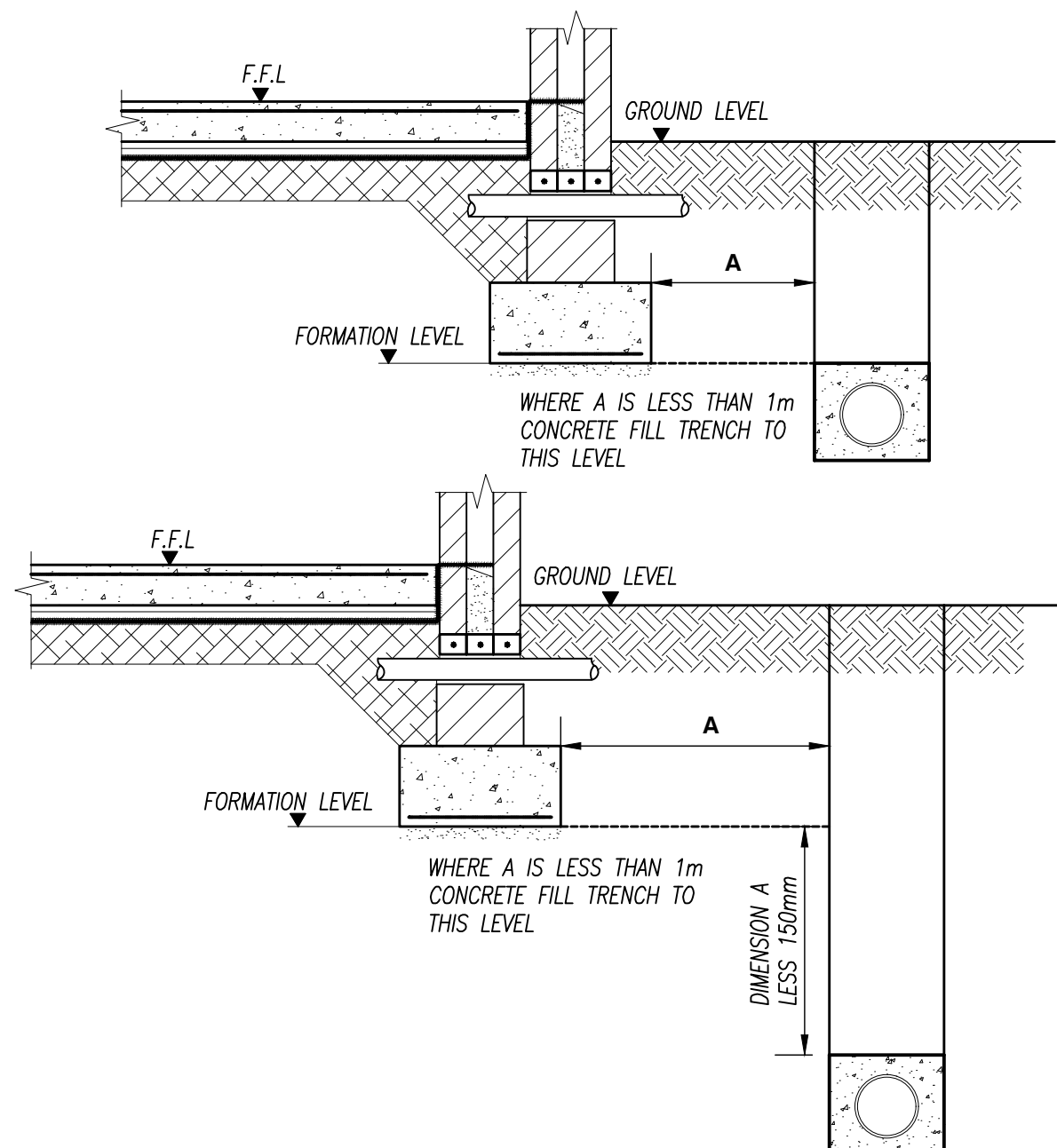
**PIPES BEDDED IN GRANULAR MATERIAL
COVER > 0.9m IN ROADS
COVER > 0.6m IN GARDENS**
SCALE 1:25



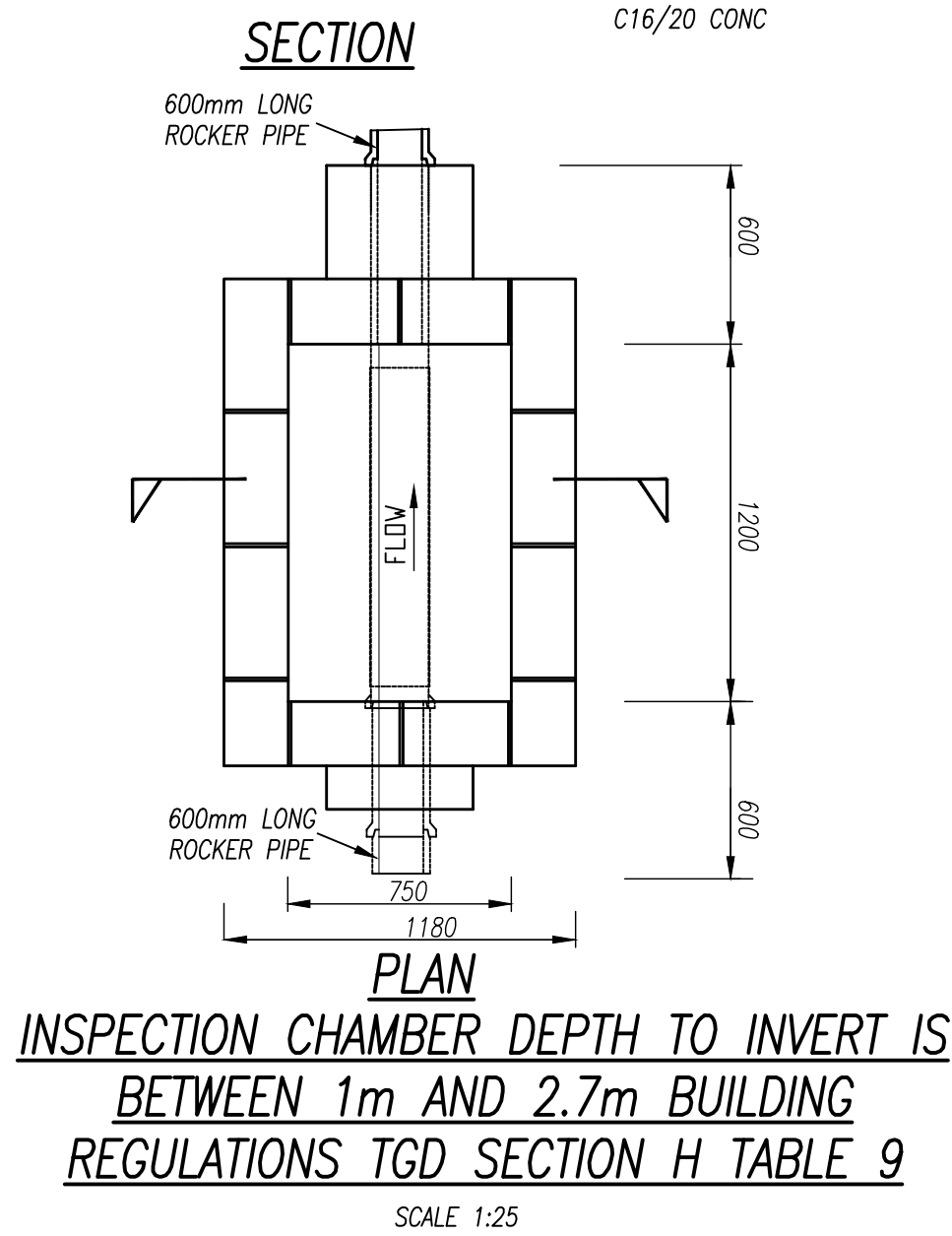
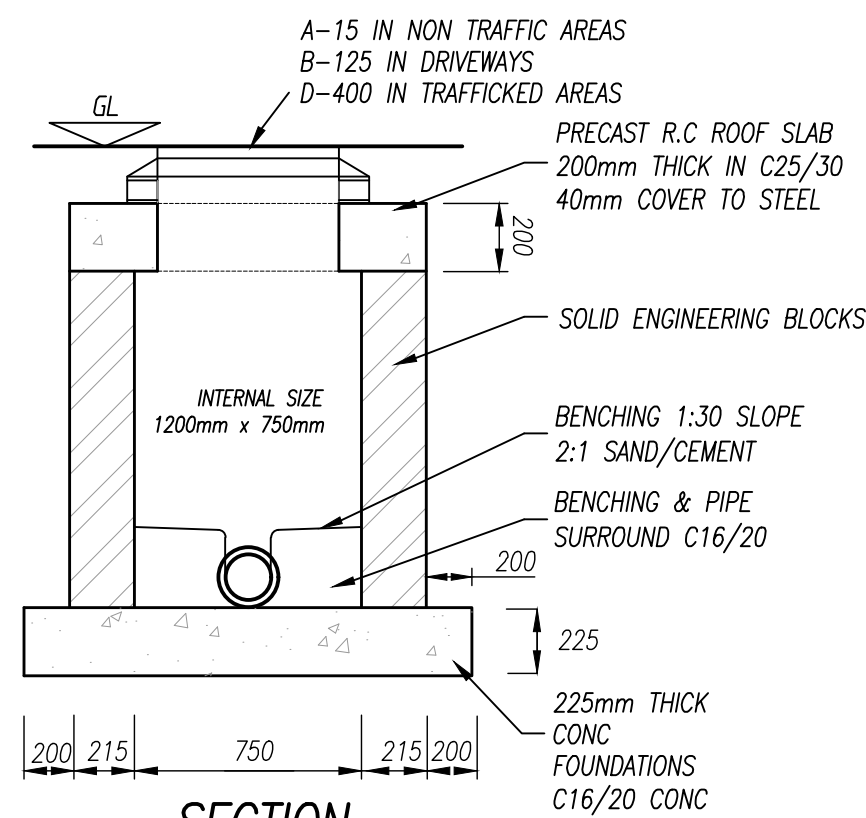
**PIPES BEDDED IN GRANULAR MATERIAL
COVER < 0.9m IN ROADS
COVER < 0.6m IN GARDENS**
SCALE 1:25



**PIPES BEDDING ALTERNATIVE DETAIL
COVER < 0.9m IN ROADS
COVER < 0.6m IN GARDENS**
SCALE 1:25



TYPICAL DETAIL WHERE PIPE RUNS NEAR BUILDINGS
SCALE 1:25



**INSPECTION CHAMBER DEPTH TO INVERT IS
BETWEEN 1m AND 2.7m BUILDING
REGULATIONS TGD SECTION H TABLE 9**
SCALE 1:25

NOTES:

- DO NOT SCALE. USE FIGURED DIMENSIONS ONLY.
- THIS DRAWING IS TO BE READ IN CONJUNCTION WITH ALL OTHER RELEVANT ARCHITECTURAL AND ENGINEERING DRAWINGS.
- ALL WORKS TO BE CARRIED OUT IN ACCORDANCE WITH THE REQUIREMENTS OF THE BUILDING REGULATIONS 2010 SECTION H "DRAINAGE AND WASTE WATER DISPOSAL" AND WITH LOCAL AUTHORITY REQUIREMENTS.
- ANY ALTERNATIVE DETAILS PROPOSED BY THE CONTRACTOR SHALL BE SUBMITTED TO THE ENGINEER AT LEAST 2 WEEKS PRIOR TO THE CONSTRUCTION OF THE DRAIN
- MINIMUM SPACING OF ACCESS POINTS TO BE IN ACCORDANCE WITH BUILDING REGULATIONS TECHNICAL GUIDANCE DOCUMENT SECTION 4 TABLE 10
- DETAILS OF MATERIALS FOR CONSTRUCTION REFER TO BUILDING REGULATIONS TECHNICAL GUIDANCE DOCUMENT SECTION 4 TABLE 11
- BACKFILL OF ALL INSPECTION CHAMBERS TO BE 808 BACKFILL IN 200MM LAYERS
- INSTALLATION OF PLASTIC PIPES AND FITTINGS, GULLIES, AJ'S ETC TO BE STRICTLY IN ACCORDANCE WITH MANUFACTURERS INSTRUCTIONS

P2	07/08/25	FURTHER INFORMATION SUBMISSION	PW	EC
P1	16/04/25	LRO STAGE 3 PLANNING SUBMISSION	GB	EC

Amendments

Project

WOODTOWN, BALLYCULLEN

Title

PRIVATE SURFACE WATER
DRAINAGE DETAILS

Client

LAGAN HOMES BALLYCULLEN LIMITED

Status

PLANNING

Designed By

EC

Approved

JG

Waterman Ref

24-007

Drawn By

GB

Date

APRIL 2025

Scales @ A1

AS SHOWN

Project

BYCN- WM - ZZ - XX-DR- C - P1231

Originator

Volume

Level

Type

Role

Number

Revision

P2

Drawing Location

W:\Projects\24\24-007 Woodtown Ballycullen\Drawings\Waterman Moylan\Civil\Planning\Autocad Drawings\BYCN-WM-ZZ-XX-DR-C-P1231 - Private Surface Water Drainage Details.dwg

Date: Aug 12, 2025 9:38am